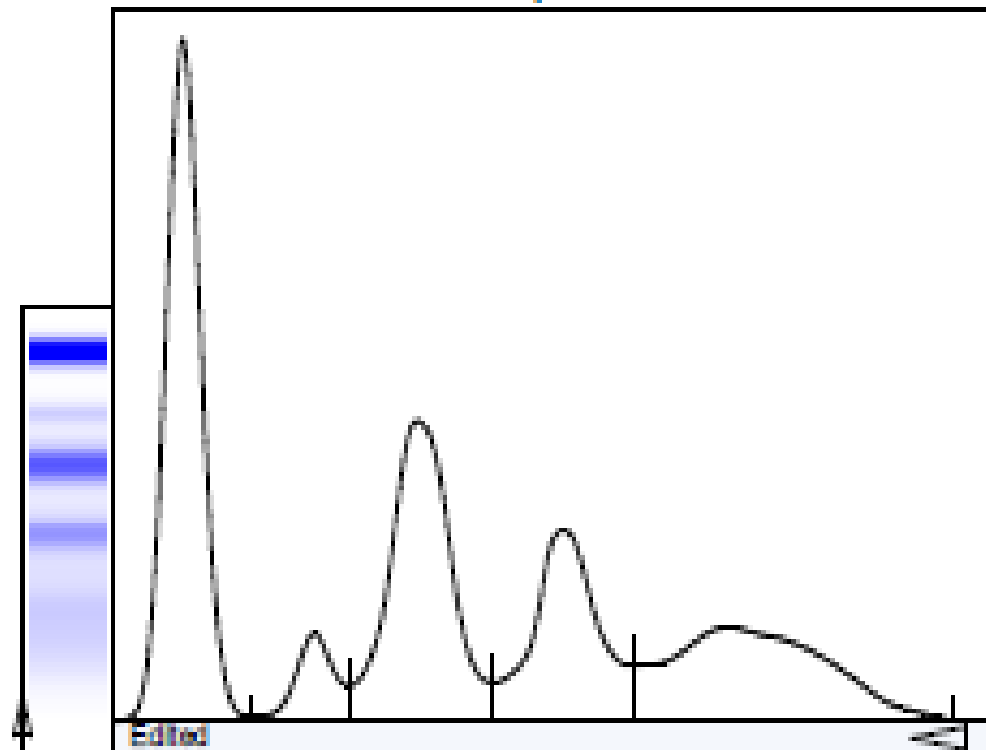


### Electroforesis de seroproteinas



Fracciones	%	% Normal	(g/l)	(g/l) Normal
Albumin	33.0 ↓	54.0 - 66.0	1.8 ↓	3.2 - 5.3
Alpha 1	4.6 ↑	1.4 - 2.8	0.3	0.1 - 0.4
Alpha 2	24.9 ↑	9.1 - 13.8	1.4 ↑	0.4 - 1.0
Beta	16.9 ↑	8.7 - 14.4	0.9	0.2 - 1.2
Gamma	20.6 ↑	10.6 - 19.2	1.1	0.7 - 1.7

A/G Ratio 0.49

Tot. Prot. (g/l) 5.5 ↓ 6.4 - 8.3